

SAM'S GARAGE DOORS LTD.

SINCE
1991



COMMERCIAL-INDUSTRIAL UNDERGROUND PARKADE SECURITY ENCLOSURE

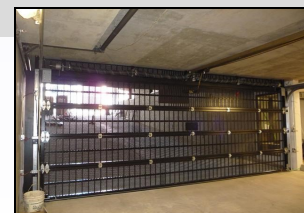
System Description:

- *Manufactured gate system with a (2-7 section) high configuration. Fascia where required by design of opening.*
- *Door assembly designed to withstand maximum use of 1,000,000 spring cycles.*
- *Powder coated aluminum to specified color*

CENTURION
GATE 1000TM

OUTPERFORMING SINCE 1991

- *Proven quality and reliability*
- *Outperforms when maximum visibility and performance is required*
- *Manufactured using highest-grade materials*
- *Ideal for all parkade and garage enclosure applications, service stations, municipal facilities and more.*



CENTURION™ GATE MODEL CLASSIFICATION

CENTURION APPLICATION

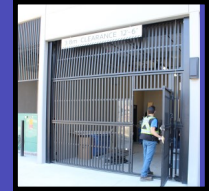
Model Matrix



MAIN ENTRY 100-SERIES



RESIDENTIAL ENTRY 200 -SERIES



PRIVATE STALL GARAGE 300-SERIES

**Paladin Basic
Main Entry-1100**

**Centurion Basic
Parkade Entry-1200**

**Centurion Basic
Private Stall Entry-1300**

Security Gates Designed with sufficient economic use in mind Including...

Security Gates Designed with sufficient economic use in mind Including...

Security Gates Designed with sufficient economic use in mind Including...

**CENTURION
STANDARD
1000**

STANDARD TROLLEY OPERATOR

STANDARD TROLLEY OPERATOR

BUILT-IN MANDOOR FOR PRIVATE ENTRY AND EXIT

STANDARD CONCENTRATED PICKETS CONFIGURATION WITH 4'-0" TOP & 2'-6" BOTTOM

STANDARD CONCENTRATED PICKETS CONFIGURATION WITH 4'-0" TOP & 2'-6" BOTTOM

OPTIONAL KEY PAD LOCK ON BUILT-IN MANDOOR ENTRY

STANDARD 2 1/2"x2 1/2"RAIL FASCIA INFILLS FOR FRAME

TYPICAL 3 INCH COMMERCIAL GRADE HARDWARE PACKAGE

TYPICAL 3 INCH COMMERCIAL GRADE HARDWARE PACKAGE

EXPANDED MESH ON SECTIONS REQUIRED

**G
R
A
D
E**

STANDARD 5/8"x5/8" PICKET FOR SECTIONS

ADDITIONAL FOB ACCESS REQUIRED FOR RESIDENTS

TYPICAL 2 INCH RESIDENTIAL GRADE HARDWARE PACKAGE

ADDITIONAL SECURITY INFILL FENCE (7'-0" MIN HEIGHT) INCLUDED TO ENCLOSE RESIDENTIAL PARKADE SPACES

DOUBLE CONCENTRATION OF PICKETS ON TOP AND MIDDLE SECTIONS

SEPARATE OR BUILT IN MANDOOR LOCATED AND RESIDENTIAL ENTRIES MANUFACTURED IN TYPICAL 3'-0"x7'-0" FOR OPENINGS

MATCHING INFILL ABOVE

**CENTURION
PREMIUM
2000**

**Centurion Premium
Main Entry-2100**

**Centurion Premium
Parkade Entry-2200**

**Centurion Premium
Private Stall Entry-2300**

PREMIUM 3"x3" TUBE FASCIA INFILLS FOR FRAME

Same spec as above with additional stronger frame and picket with infill to match above

Same spec as above with additional stronger frame and picket with infill to match above

Same spec as above with additional stronger frame and picket with infill to match above

STANDARD 1"x1" PICKET FOR SECTIONS

CENTURION™ GATE SPECIFICATIONS

Gate Features & Construction

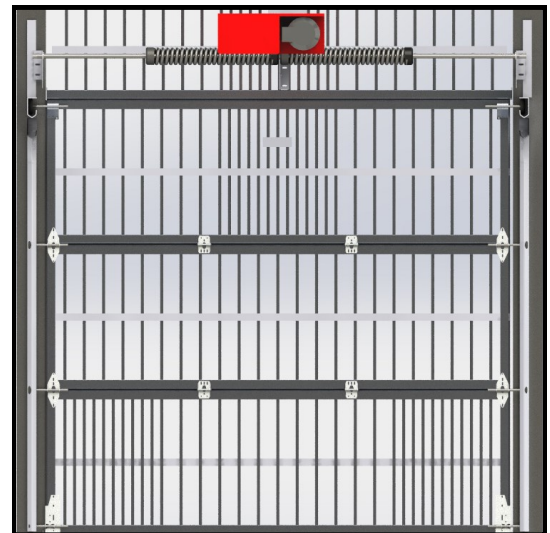
1. Aluminum Alloy: 6063-T5 / Aluminum Extrusions to ASTM B221 and B429
2. Section frame to be 2" x 2 ½" top rail with 5/8" square pickets on 4 ½" centers. Horizontal center supports to be 1 ½" by ¾" punched channel for reinforcing the 5/8" vertical pickets and MUST be welded. Top and bottom corners shall have 4" x 5" x 3/16" aluminum support plates.
3. Bottom gate section to be tapered to allow for slope in floor if necessary; no add-on material to the bottom after fabrication.
4. Top section center motor arm support to consist of an aluminum plate (24" wide x 4" x 3/16") welded to the front and back of the top section pickets.
5. Optional perforated aluminum sheets at both the inside right/left side of bottom section to prevent tampering with photocells. (Note that standard design is using concentrated pickets at 2 1/4" c.c.) Must be a minimum of 2'-6" width, full height of bottom section.
6. Optional perforated aluminum sheet (1/16" thick) at center of gate, inside of section to prevent tampering with drawbar drop down arm. Minimum of 4'-0" wide full height of top section. (Note that standard design is using concentrated pickets at 2 1/4" c.c.)
7. If sheeting is used, it is to be welded at factory and powder coated to same color as sections



You can get a free quote at: info@samsgaragedoors.ca

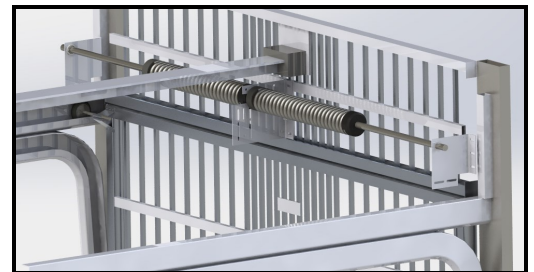
Track & Hardware

1. Aluminum mounting posts if required for mounting vertical tracks, are to be 2" x 6" x 3/16". If angles are to be used they should be 3" x 5" x 1/4". Powder coat posts or angles same colour as gate sections.
2. Hinges: 11 ga double end hinges complete with welded reinforcing plates located on the back of sections.
3. 5/16"Øx1-1/4" tech screw (self-tappers) used for all hardware mounting
4. Sound deadening: Use vibra-sonic hangars mounted between ceiling slab and gate system(if gate is mounted under an office or residence)
5. Track to be 2" commercial grade mounted on continuous angle with 3" heavy duty track as an optional upgrade.
6. Must have front cable pickups



Gate Operation & Cycling

1. Ceiling mounted motor (drawbar type), 115 volt single phase and 6 amp.
2. Motor models to be Lift Master BT for standard use, with an upgrade optional Lift Master Model HCT
3. Safety devices to include pneumatic bottom safety and photo cell beams across the door width
4. Motor to have built in timer to close



Control Options

ENTRY

- Key fob - visor mount or keychain
- Digital key pad

EXIT

- In ground loop detector or above ground treadle hose
- Key fob, digital key pad or proximity card
- Motion detector

CENTURION™ GATE FEATURES



6063-T5 ALUMINUM ALLOY
COMMERCIAL OVERHEAD ALUMINUM PICKET GATE

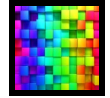
COLOUR CHOICES



**BLACK POWDER
COAT FINISH**



**WHITE POWDER
COAT FINISH**



**CUSTOM COLOURS
AVAILABLE UPON REQUEST**

WARRANTY PROGRAM



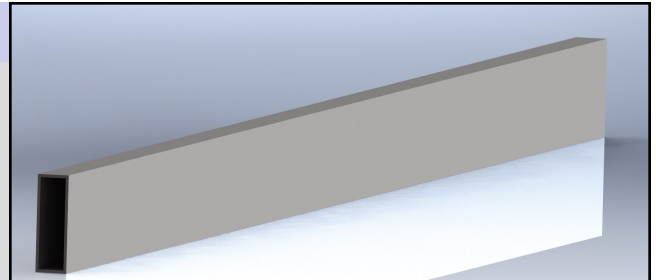
**WARRANTY
ON
WORKMANSHIP
& FINISH**

**Sam's Garage Doors LTD.
Certified Preventative
Maintenance Program**

We would like to take the this opportunity to introduce to you our Preventative Maintenance Program (PMP). An effective PMP and periodic inspection procedure will help to prevent failures from occurring and will aid in reducing costly service calls . To learn more visit www.samsgaragedoors.ca

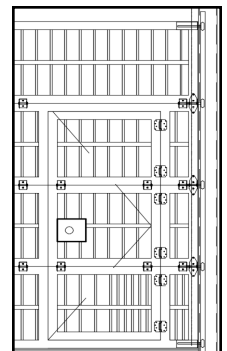
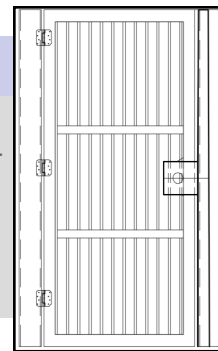
MOUNTING OPTIONS

- 2'X6"x3/16" ALUMINUM TUBE IS USED FOR ALUMINUM IS USED FOR STRONGER SUPPORT FOR BEARING THE LOAD OF A GATE
- DESIGNED TO WITHSTAND NOMINAL IMPACT FROM SMALL COLLISIONS. ROLLER TRACK BEHIND IS STIFFENED AND GUARD FROM EXPOSURE .
- BUILT TO ACT AS A NOISE DAMPENER TO LOWER OVERALL NOISE OF GATE DURING CYCLING



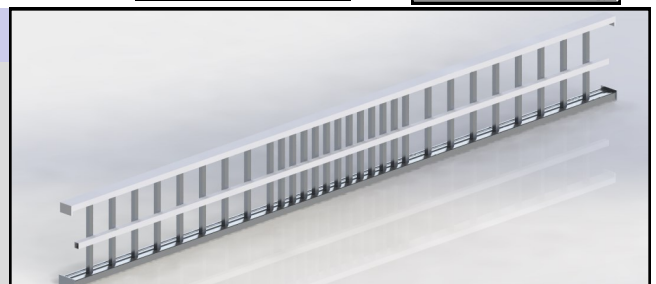
MANDOORS & BUILT-IN MANDOORS

- EASY ACCESS WITHOUT OPENING OVERHEAD DOOR.
- PROVIDES ENTRY INTO BUILDING WHEN OVERHEAD DOOR IS ONLY ACCESS OR EMERGENCY EXIT IN CASE OF POWER FAILURE.
- USEFUL IN PRIVATE STALL APPLICATIONS FOR STALLS ENCLOSED FOR PRIVATE
- STANDARD SIZE 3'-0"x7'-0" MINIMUM REQUIREMENT SIZE: 2'-10"x6'-8"



TOP FASCIA INFILL

- PROVIDES A SECURE ENCLOSURE ABOVE OF THE OVERHEAD GATE
- PROVIDES AN ENCLOSURE WHEN THERE IS NO HEADER ABOVE THE GATE
- CAN BE USED AS A LOUVER OR AS A SEPARATE INFILL FOR KNOCK-OUT PANELS
- CAN BE REINFORCED WITH EXPANDED MESH OR PERFORATED STEEL COVERING
- CAN BE MODIFIED TO PROVIDE ACCESS AND SPACE FOR ABOVE DUCTWORK, PIPING OR MECHANICAL SYSTEMS.



CENTURION GATE FEATURES

SIGNAGE OPTIONS

Sam's Garage Doors provides signage solutions for any commercial public display applications. Signage material ranges from aluminum to steel however further development of material designs can be negotiated. Sam's Garage Doors can work with current logos that exist and create specific ones, all pending upon customer and or architect approval.



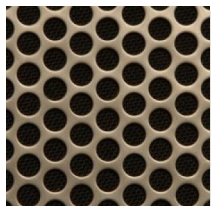
SECURITY FENCE OPTIONS

Sam's Garage Doors also provides fixed enclosure options, such as security fences. The purpose of these enclosures is to act as barriers between different areas in the underground parkade. These fences can be configured to any design of customer and architect approval. Security fences are designed out of the same Centurion gate materials and cover spans up to but not limited from 1'-0" to 40'-0"(typ) and a heights ranging but not limited from 7'-0" to 14'-0"(typ) in areas requiring coverage.

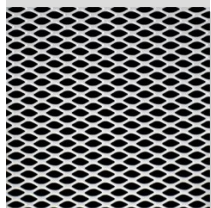


SECURITY GATE FINISH OPTIONS

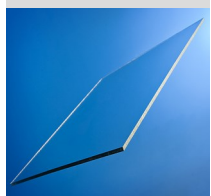
For extra added security and finish. Centurion gates can be covered in a range of material coverage from the following selection



PERFORATED SHEET



EXPANDED MESH



LEXAN COVERAGE

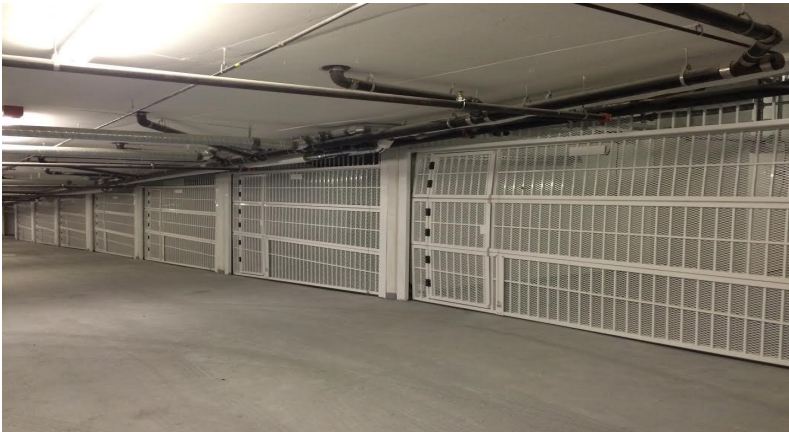


HEADER INFILL



CAR PORT HEADER INFILL APPLICATION

CENTURION GATE GALLERY



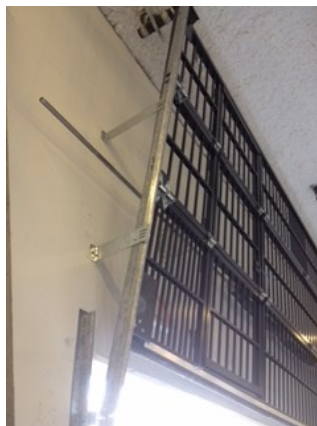
Underground Parkade Private Stall Gates



Privacy Panel Private Stall Gate



Perforated Steel Covered Main



High Lift Track Application



Typical Main Entry Parkade Gate

SAM'S GARAGE DOORS LTD.

OUR COQUITLAM LOCATION

